

# Tiranti-Codoli

## Puller-Pull studs



**I** Il Tirante, o Codolo, viene prodotto secondo le seguenti specifiche:

- > norma DIN 69872
- > norma ISO 7388/2A - 7388/2B
- > norma MAS 403 BT
- > norma MAS 403 BT TYPE I
- > norma MAS BT ANSI TYPE
- > norma CAT ANSI TYPE
- > norma ANSI BT 5.50 CATERPILLAR
- > norma BT ( JIS B 6339)
- > FAMUP e CB FERRARI

Vengono inoltre prodotti, su richiesta, tiranti per altre tipologie di macchine CNC.

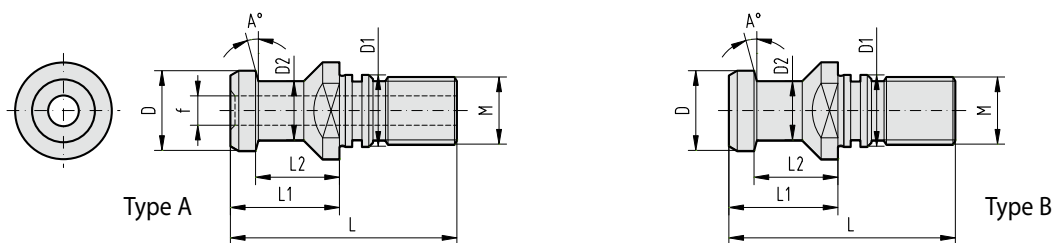
**GB** The pullers, or pull studs, are manufactured according to the following specifications:

- > Standard DIN 69872
- > Standard ISO 7388/2A - 7388/2B
- > Standard MAS 403 BT
- > Standard MAS 403 BT TYPE I
- > Standard MAS BT ANSI TYPE
- > Standard CAT ANSI TYPE
- > Standard ANSI BT 5.50 CATERPILLAR
- > Standard BT ( JIS B 6339)
- > FAMUP and CB FERRARI

Pull studs for other types of CNC machines are also available

### CODOLI A NORMA DIN 69872

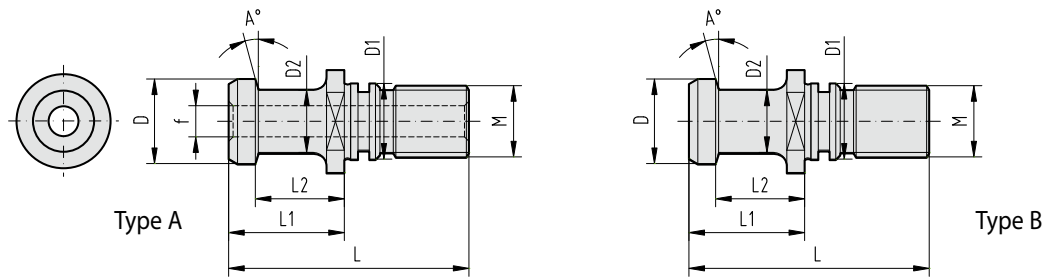
#### STANDARD DIN 69872 PULL STUDS



ARTICOLO	TIPO-TYPE	f	CONO-SIZE	M	L	L1 +/-0,1	L2 +/-0,1	D f7	D1 f7	D2 -0,1	A°
C12DIN69872/A *	A	3	30	12	44	24	19	13	13	9	15°
C12DIN69872/B *	B	-									
C16DIN69872/A	A	7	40	16	54	26	20	19	17	14	15°
C16DIN69872/B	B	-									
C20DIN69872/A	A	9,5	45	20	65	30	23	23	21	17	15°
C20DIN69872/B	B	-									
C24DIN69872/A	A	11,5	50	24	74	34	25	28	25	21	15°
C24DIN69872/B	B	-									

\* Questo tirante è senza sede per O-Ring / \* These pull studs do not have the O-Ring seat

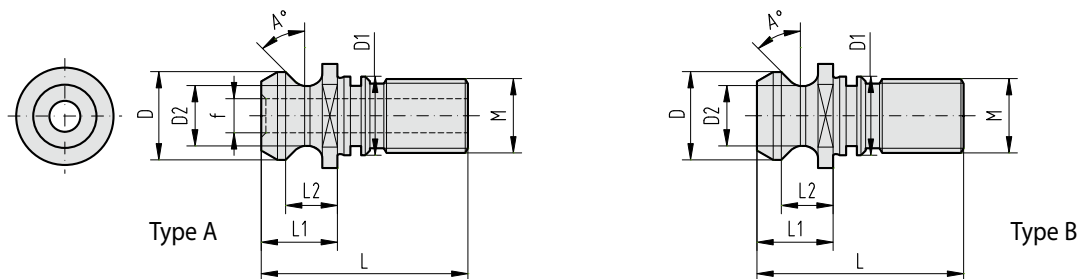
**CODOLI A NORMA ISO 7388/2A**  
**STANDARD ISO 7388/2A PULL STUDS**



ARTICOLO	TIPO-TYPE	f	CONO-SIZE	M	L	L1 +/-0,1	L2 +/-0,1	D f7	D1 h6	D2 -0,1	A°
C12ISO7388/2A/B *	B	-	30	12	44	24	19	12	13	8	15°
C16ISO7388/2A/A	A	7	40	16	54	26	20	19	17	14	15°
C16ISO7388/2A/B	B	-									
C20ISO7388/2A/A	A	9,5	45	20	65	30	23	23	21	17	15°
C20ISO7388/2A/B	B	-									
C24ISO7388/2A/A	A	11,5	50	24	74	34	25	28	25	21	15°
C24ISO7388/2A/B	B	-									

\* Questo tirante è senza sede per O-Ring / \* These pull studs do not have the O-Ring seat

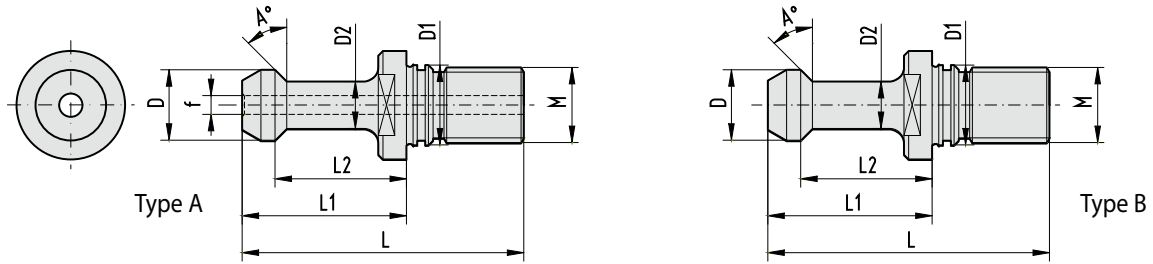
**CODOLI A NORMA ISO 7388/2B**  
**STANDARD ISO 7388/2B PULL STUDS**



ARTICOLO	TIPO-TYPE	f	CONO-SIZE	M	L	L1 +/-0,15	L2 +/-0,15	D -0,3	D1 h6	D2 -0,3	A°
C12ISO7388/2B/A *	A	4	30	12	34,00	11,65	8	13,35	13	9,3	45°
C16ISO7388/2B/A	A	7,35	40	16	44,25	16,25	11	18,95	17	12,95	45°
C16ISO7388/2B/B	B	-									
C20ISO7388/2B/A	A	9,25	45	20	56,00	20,95	14,85	24,05	21	16,30	45°
C20ISO7388/2B/B	B	-									
C24ISO7388/2B/A	A	11,55	50	24	65,40	25,40	17,80	29,00	25	19,60	45°
C24ISO7388/2B/B	B	-									

\* Questo tirante è senza sede per O-Ring / \* These pull studs do not have the O-Ring seat

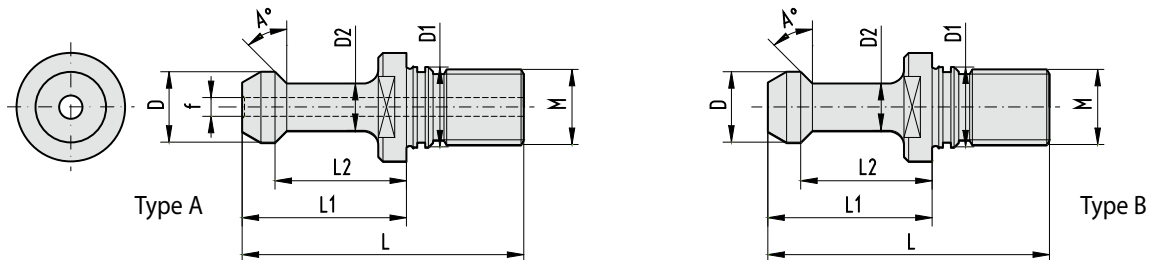
**CODOLI A NORMA MAS 403 BT**  
**STANDARD MAS 403 BT PULL STUDS**



ARTICOLO	TIPO-TYPE	f	CONO-SIZE	M	L	L1 -0,1	L2 -0,1	D -0,1	D1 h7	D2 -0,1	A°
C12MAS403BT30B30 *	B	-	30	12	43	23	18	11	12,5	7	30
C12MAS403BT30B45 *	B	-	30	12	43	23	18	11	12,5	7	45
C16MAS403BT40A30	A	4	40	16	60	35	28	15	17	10	30
C16MAS403BT40B30	B	-									
C16MAS403BT40A45	A	4									
C16MAS403BT40B45	B	-	40	16	60	35	28	15	17	10	45
C16MAS403BT40A90	A	4	40	16	60	35	28	15	17	10	90
C16MAS403BT40B90	B	-									
C20MAS403BT45B30	B	-	45	20	70	40	31	19	21	14	30
C20MAS403BT45B45	B	-	45	20	70	40	31	19	21	14	45
C24MAS403BT50A30	A	6	50	24	85	45	35	23	25	17	30
C24MAS403BT50B30	B	-									
C24MAS403BT50A45	A	6	50	24	85	45	35	23	25	17	45
C24MAS403BT50B45	B	-									
C24MAS403BT50A90	A	6	50	24	85	45	35	23	25	17	90
C24MAS403BT50B90	B	-									

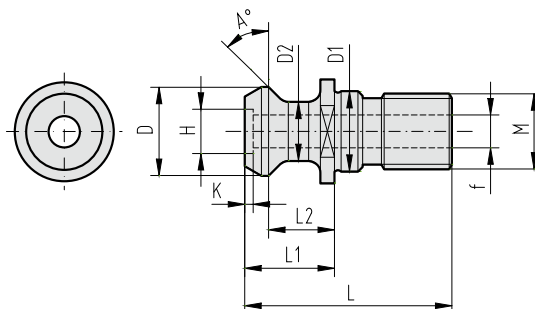
\* Questo tirante è senza sede per O-Ring / \* These pull studs do not have the O-Ring seat

**CODOLI A NORMA MAS 403 BT TYPE I**  
**STANDARD MAS 403 BT TYPE I PULL STUDS**



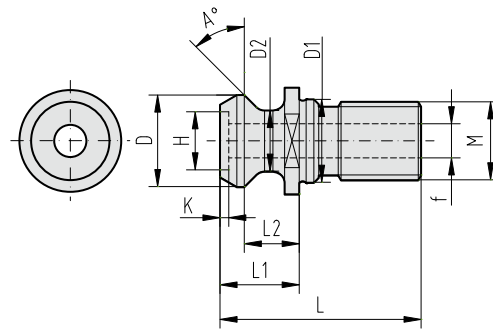
ARTICOLO	TIPO-TYPE	f	CONO-SIZE	M	L +/-0,5	L1 -0,1	L2 -0,1	D -0,1	D1 h7	D2 -0,1	A°
C16MAS403I40A45	A	4	40	16	57	32,15	25,15	15	17	10	45
C16MAS403I40B45	B	-									
C16MAS403I40B90	B	-	40	16	57	32,15	25,15	15	17	10	90

**CODOLI A NORMA MAS BT ANSI TYPE**  
**STANDARD MAS BT ANSI TYPE PULL STUDS**



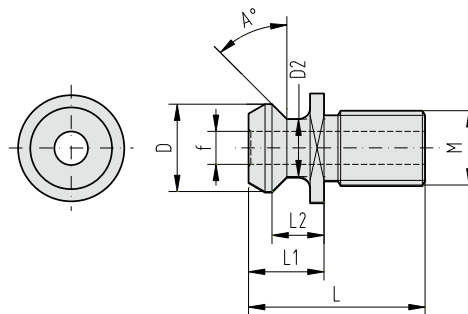
ARTICOLO	TIPO-TYPE	f	CONO-SIZE	M	L	L1 +/-0,127	L2 +/-0,127	D +/-0,127	D1 h7	D2 +/-0,127	A°	H +0,06	K +/-0,05
C16MASBTANSI40A	A	7	40	16	44,106	19,106	13,85	18,78	17	12,95	45	-	-
C24MASBTANSI50A	A	10	50	24	65,20	25,20	17,58	28,956	25	20,828	45	16	1,80

**CODOLI A NORMA CAT ANSI TYPE**  
*STANDARD CAT ANSI TYPE PULL STUDS*



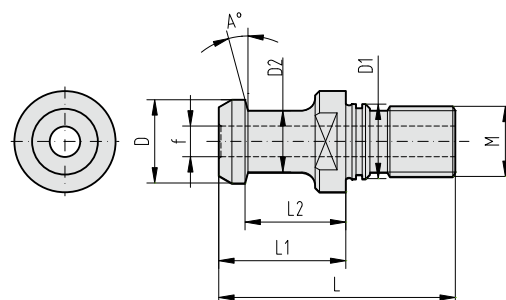
ARTICOLO	CONO-SIZE	f	M	L	L1 +/-0,127	L2 +/-0,127	D +/-0,127	D1 h7	D2 +/-0,127	A°	H +0,06	K +/-0,05
<b>C16CATANSI40A</b>	40	7	16	41,256	16,256	11,176	18,796	17	12,446	45	-	-
<b>C24CATANSI50A</b>	50	10	24	65,40	25,40	17,78	28,956	25	20,828	45	16	1,80

**CODOLI A NORMA ANSI 5.50 CATERPILLAR**  
*STANDARD ANSI 5.50 CATERPILLAR PULL STUDS*



ARTICOLO	CONO-SIZE	M	L	L1 +/-0,1	L2 +/-0,1	D +/-0,1	D2 +/-0,1	A°	f
<b>C16ANSIB5,50/40A</b>	40	16	38	16,25	11,20	18,80	12,40	45	7,1
<b>C24ANSIB5,50/50A</b>	50	24	58,40	25,40	17,80	28,95	20,80	45	11,90

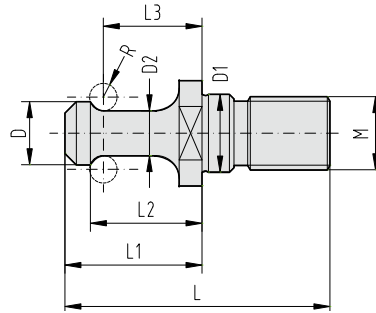
**CODOLI A NORMA BT (JIS B 6339)**  
*STANDARD BT (JIS B 6339) PULL STUDS*



ARTICOLO	CONO-SIZE	f	M	L	L1 -0,1	L2 -0,1	D f7	D1 h7	D2 -0,1	A°
<b>C16BTJISB40/A5</b>	40	5	16	54	29	23	19	17	14	15
<b>C16BTJISB40/A7</b>	40	7	16	54	29	23	19	17	14	15
<b>C24BTJISB50/A10</b>	50	10	24	74	34	25	28	25	21	15

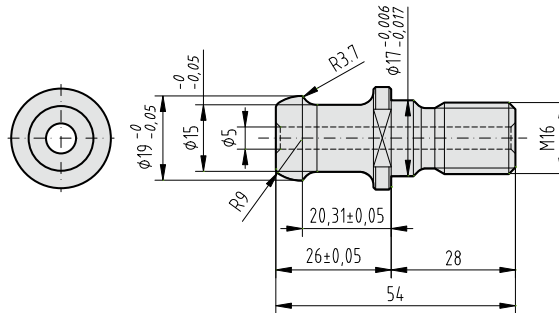
**CODOLI PER VARIE TIPOLOGIE DI MACCHINE A CNC**  
*PULL STUDS FOR DIFFERENT TYPE OF CNC MACHINES*

**CODOLI FAMUP**  
*FAMUP PULL STUDS*

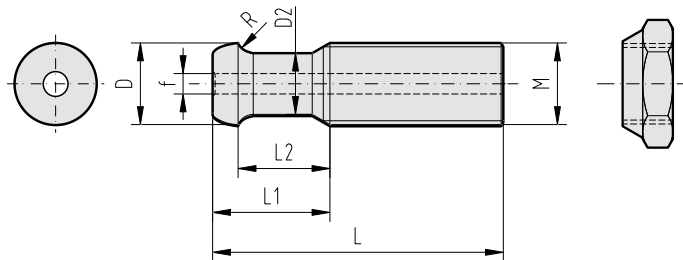


ARTICOLO	CONO-SIZE	f	M	L	L1	L2	L3	D -0,1	D1 h6	D2 -0,1	R
<b>C12FAMUPL40</b>	30	-	12	40	20	16,65	14,2	9,8	13	5,8	2,5
<b>C16FAMUPL55</b>	40	-	16	55	27	21,43	18,6	13,8	17	9,8	3
<b>C16FAMUPL58</b>	40	-	16	58	30	24,43	21,6	13,8	17	9,8	3

**CODOLO CB FERRARI**  
*CB FERRARI PULL STUD*  
 ARTICOLO: C16FERRL54A  
 CONO-SIZE: 40



**CODOLI CB FERRARI**  
*CB FERRARI PULL STUDS*



ARTICOLO	CONO-SIZE	f	M	L	L1	L2	D -0,05/0,1	D1	D2 -0,1	R
<b>C16FERRL57A</b>	40	4	16	57	23	18	16	-	12	3,2
<b>C16FERRL57B</b>	40	-	16	57	23	18	16	-	12	3,2